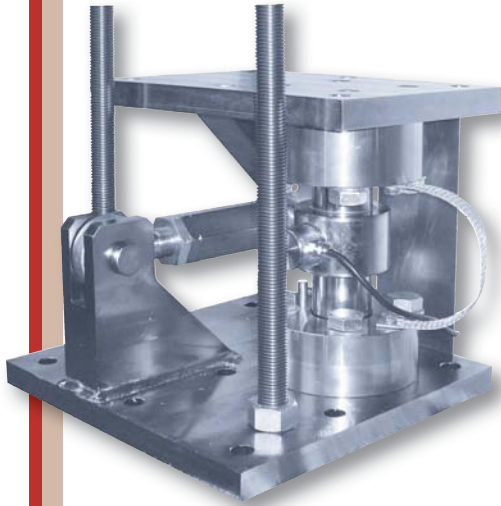




# STABICAN

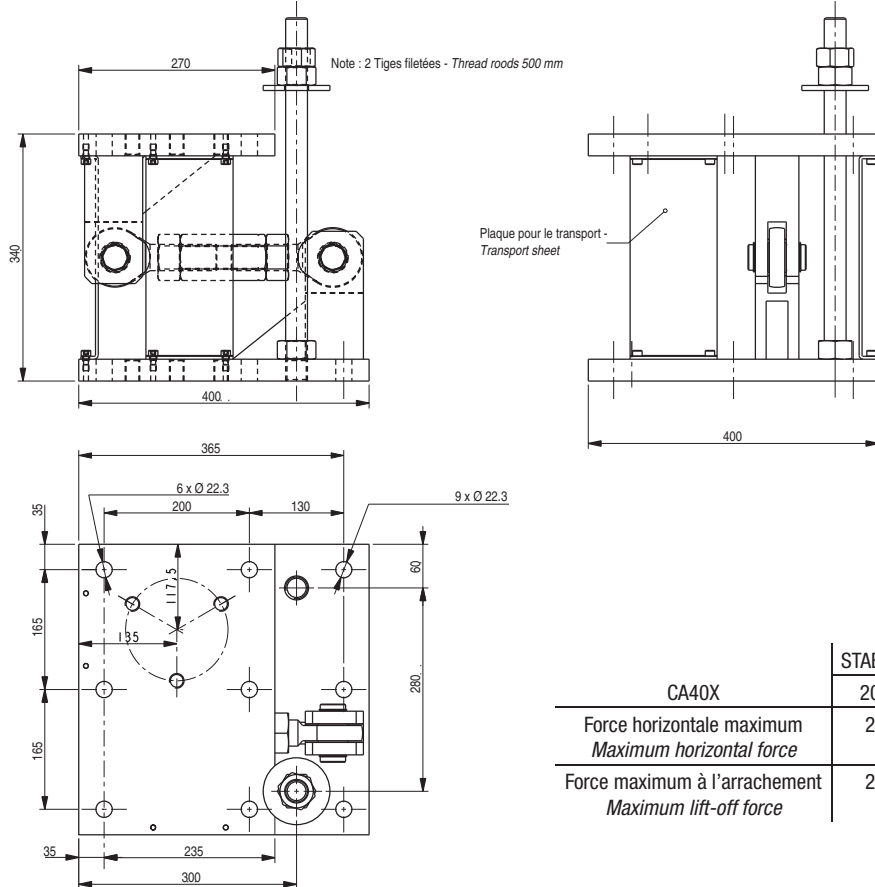
**Version 100 t ... 200 t**



- Conçu pour le pesage de cuves et silos de forte capacité
- Construction en acier zingué
- Stabilisation à rotules intégrée
- Dispositif d'anti-soulèvement

- *Designed for high capacity tanks or silos*
- *Zinc plated construction*
- *Integrated stabilisation rods*
- *Lift-off prevention device*

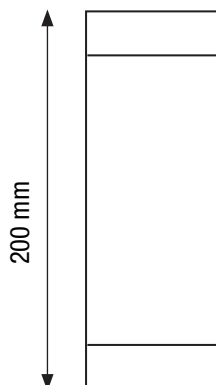
Capteur et plaques vendus séparément  
*Load cell and plates sold separately*



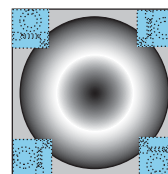
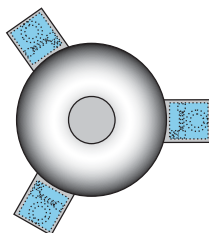
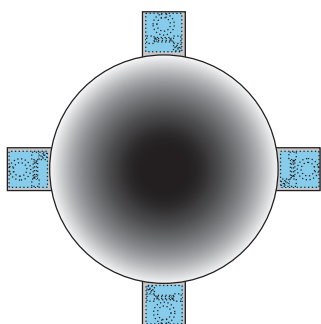
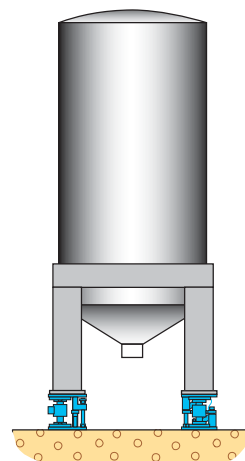
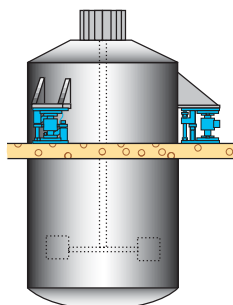
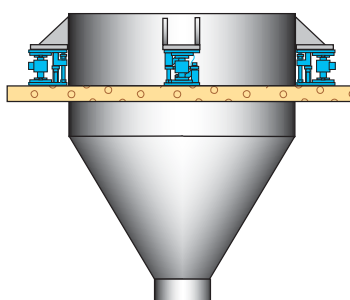
CA40X	STABICAN
	200 t
Force horizontale maximum <i>Maximum horizontal force</i>	20 t
Force maximum à l'arrachement <i>Maximum lift-off force</i>	23 t

Toutes dimensions en mm. Dimensions et spécifications non contractuelles - All dimensions in mm. Dimensions and specifications do not constitute any liability whatsoever.

## Faux capteur - Dummy load cell



## Exemples d'utilisations - Mounting examples



L'INFINIMENT PRECIS INFINITE PRECISION

BP501 - F 74105 Annemasse Cedex

Tél. : (+33) 4 50 87 78 64

Fax : (+33) 4 50 87 78 42

E.mail : info@scaime.com



Téléchargez tous  
nos documents sur :  
Download all  
our documents in :  
[www.scaime.com](http://www.scaime.com)

Agent